



User Guide v1.2

BK4811B Demo Board

Beken Corporation
3A, 1278 Keyuan Road, Zhangjiang High-Tech Park
Pudong New Area, Shanghai 201203
People's Republic of China

Tel: (+86-21) 51086811
Fax: (+86-21) 6087 1277
Email: info@bekencorp.com
<http://www.bekencorp.com/>

Getting Started

Personal Computer Requirement

Hardware Description

BK4811B Demo Board

Board Set for Development

Test Setup

Software Description

User Interface

User Interface in TX mode

User Interface in RX mode

Link Test

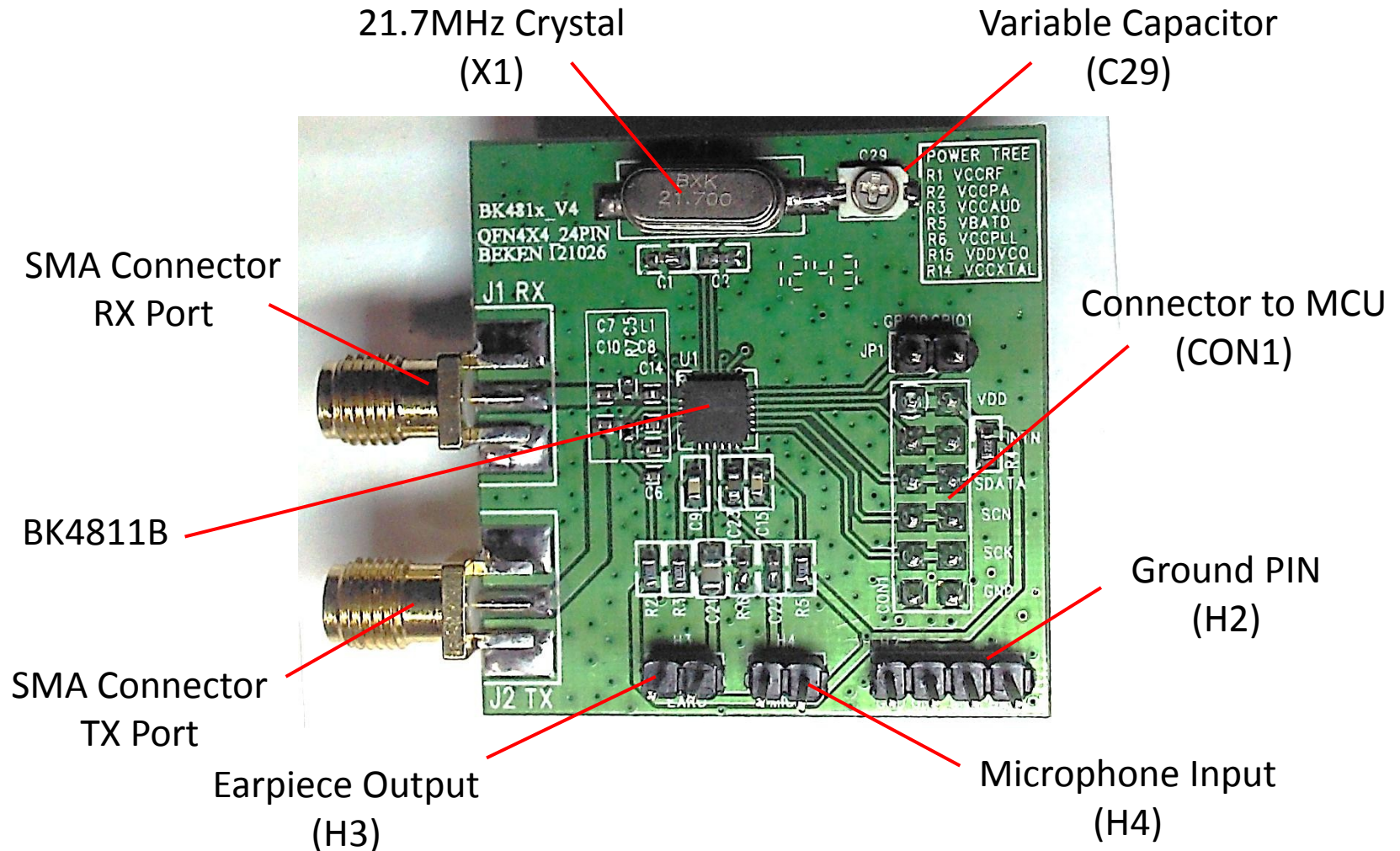
FSK PER Test

Register Operation

Personal Computer Requirements

Computer	IBM PC AT or compatible
Processor	Pentium 500 or better
Operating Systems	Windows XP, Windows 7
System Memory Required	>128MB
Hard Disk Space Required	>100MB
Video Standard	SVGA (1024 x 768 min.)
Mouse	Microsoft Compatible

Hardware Description

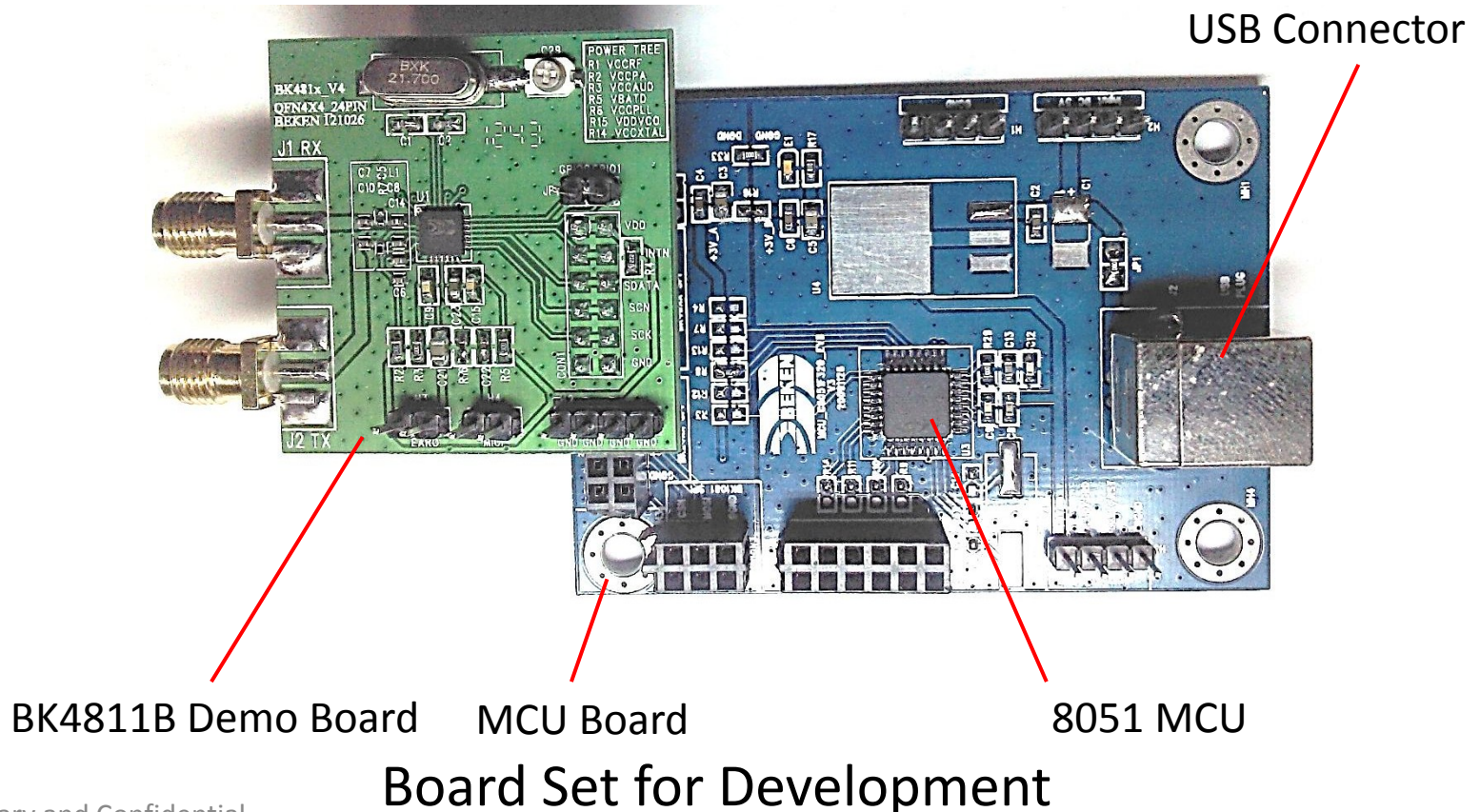


BK4811B Demo Board

Hardware Description

The BK4811B is a walkie-talkie transceiver, and must work together with a MCU. The BK4811B demo board should be mounted onto a MCU board through connector(CON1).

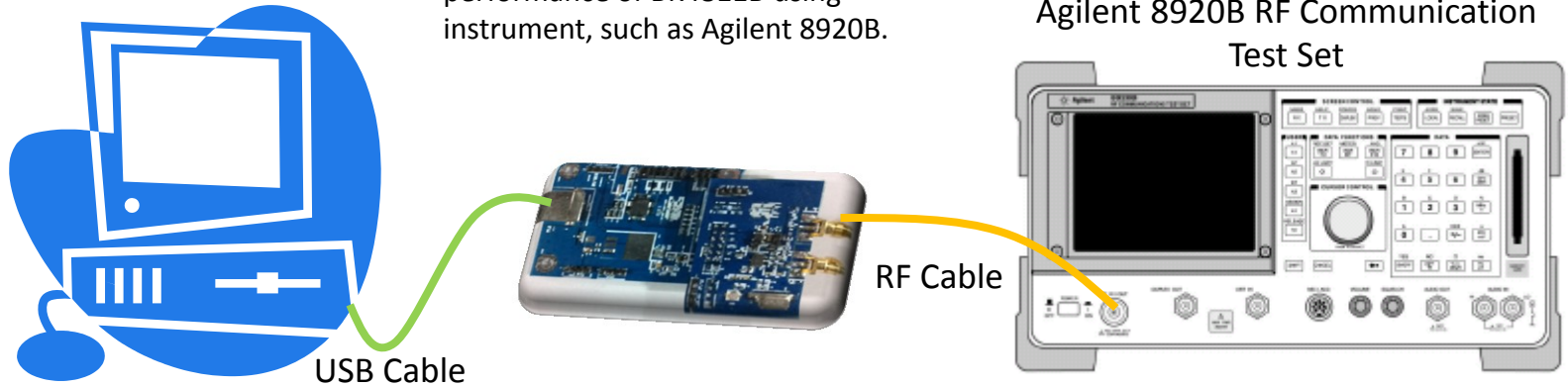
The MCU has a built-in regulator to convert the 5V USB voltage to 3.3V voltage as the power supply of BK4811B demo board. Therefore, additional power supply is not necessary.



Test Setup

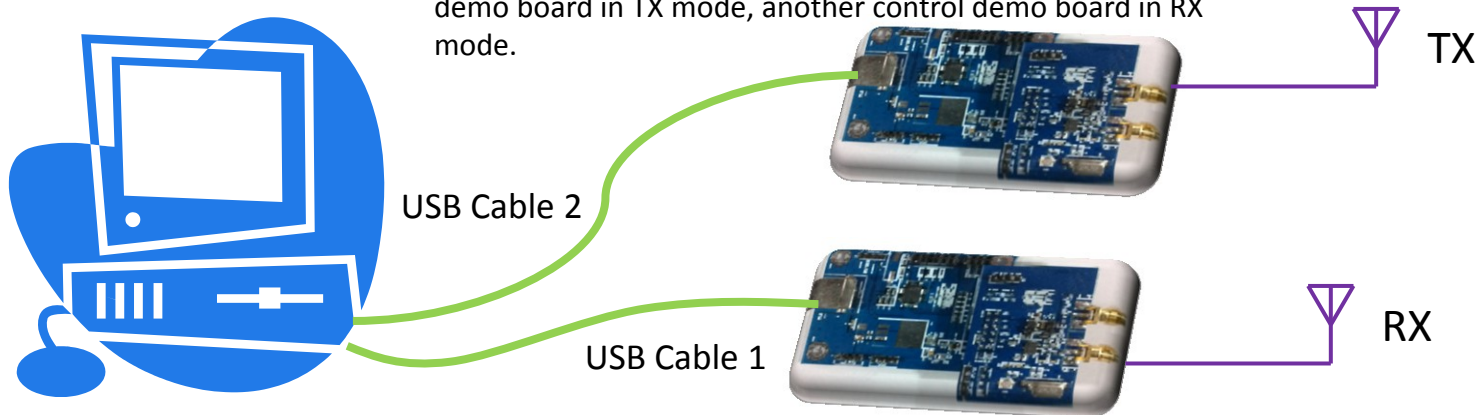
Method 1:

DUT test. Can be used to quantify the performance of BK4811B using instrument, such as Agilent 8920B.



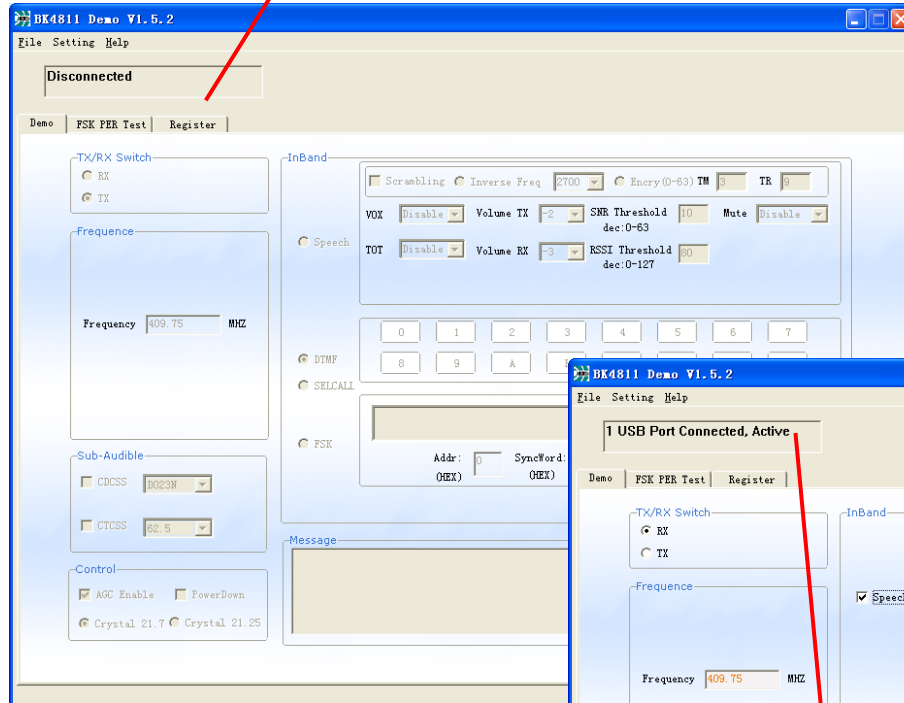
Method 2:

Link test. You should open 2 software window. One control demo board in TX mode, another control demo board in RX mode.



Software Description

Status indicator: Disconnected

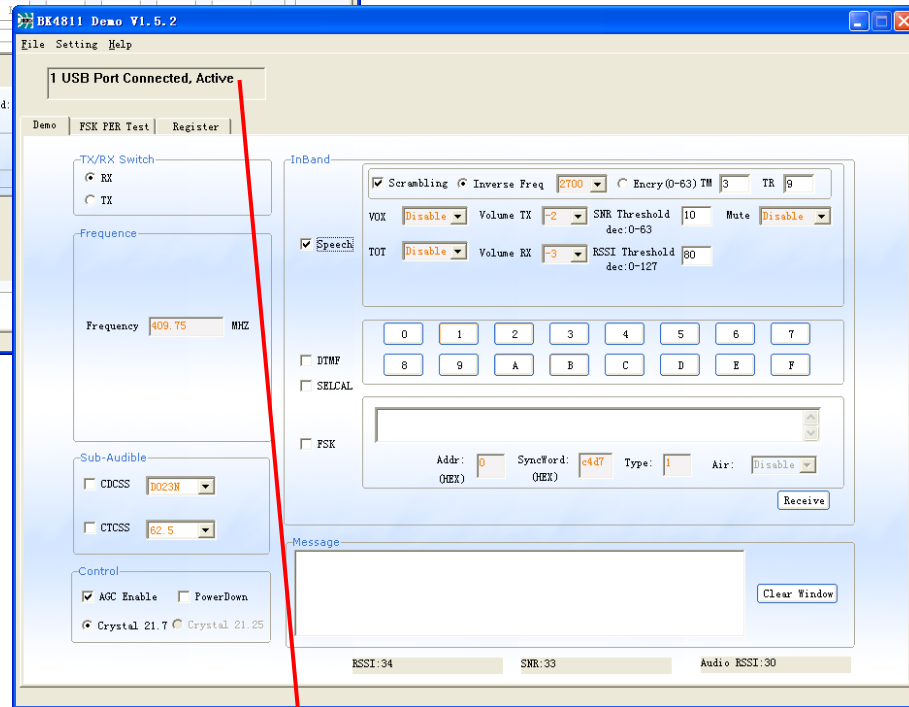
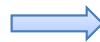


User Interface

Initial user interface of test software before connecting board set to computer. All buttons and select boxes are in gray, and can't be operated.

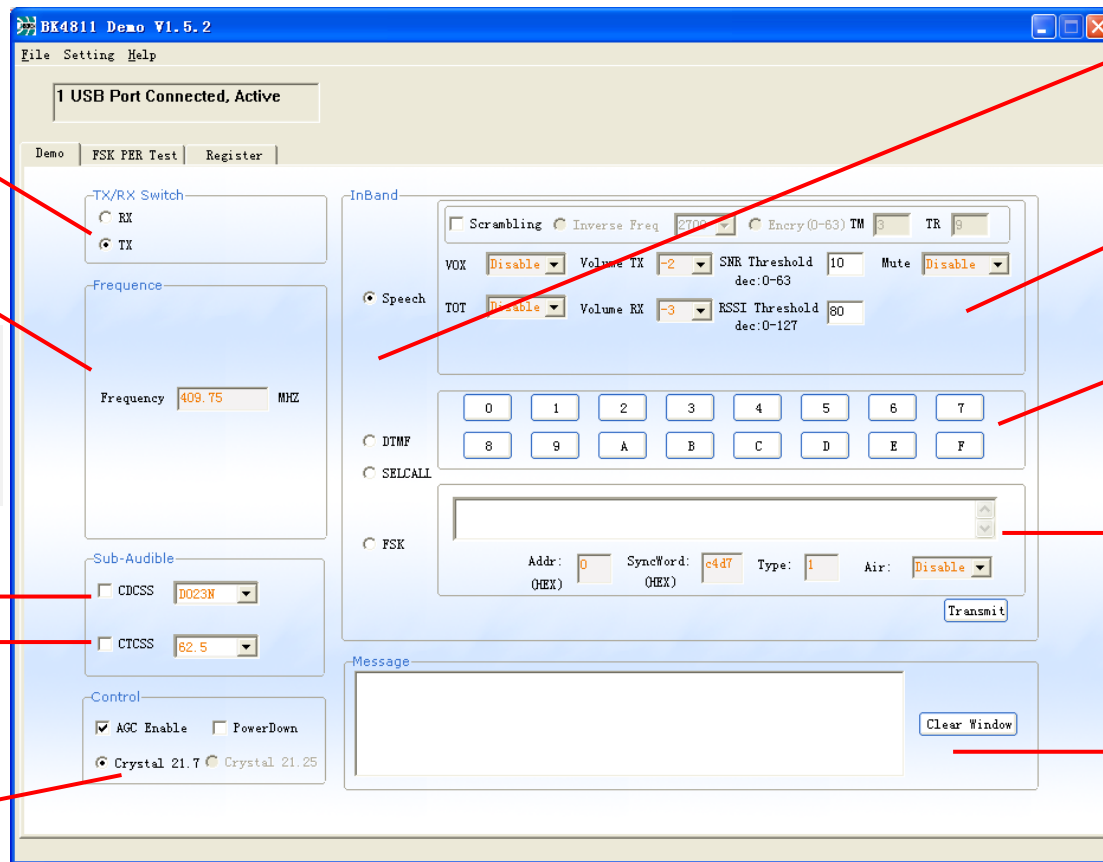


User interface activated after connecting board set to computer. All buttons and select boxes are lighted, and can be operated.



Status indicator: 1 USB port Connected. Active

Software Description



TX/RX mode selection

Set Operating Frequency

Click "Enter" on key board after inputting the value. Otherwise, the frequency change doesn't take effect.

Set CDCSS word

Set CTCSS frequency

Please ignore these operations in this software version.

Signal type selection

Audio, DTMF, SELCALL & FSK

Set parameters in audio mode

Send single symbol

Apply to DTMF, SELCALL and FSK

Send single symbol or symbol string

Apply to DTMF, SELCALL and FSK

Message area

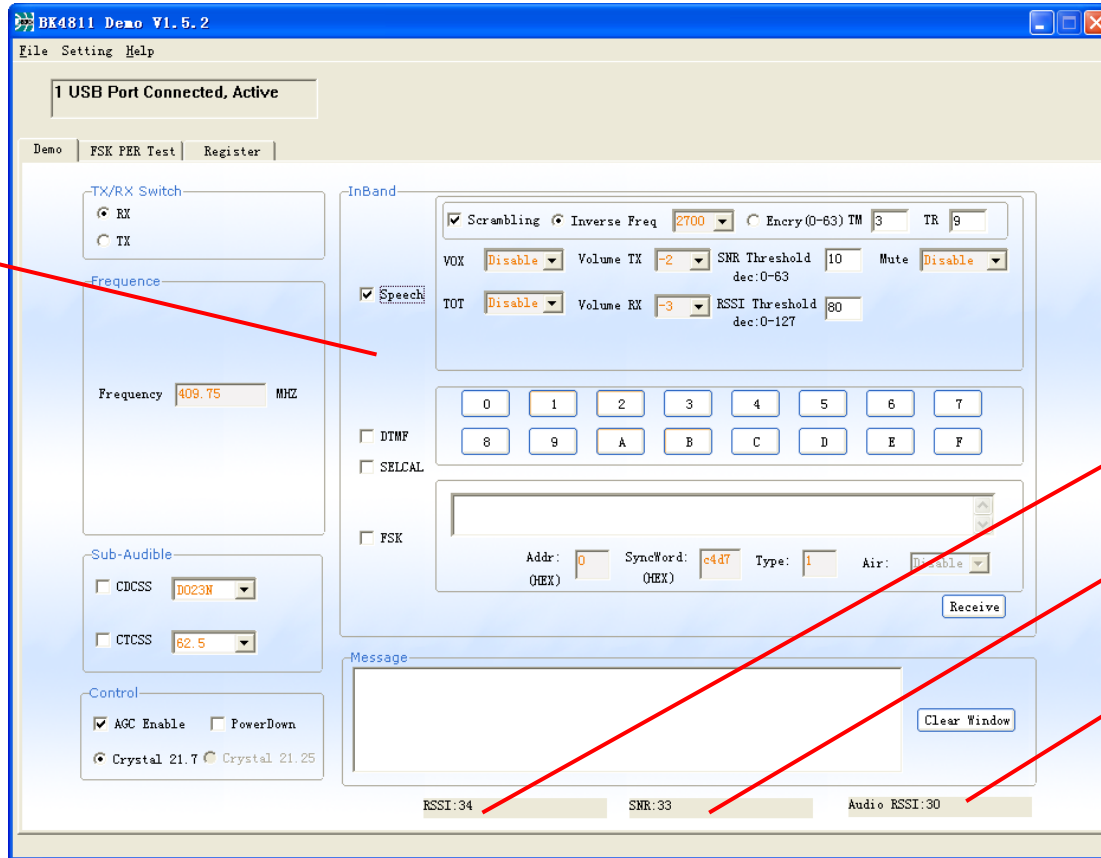
User Interface in TX mode

Software Description

The user interface in RX mode is almost the same with that in TX Mode except two areas given below.

Signal selection

The single select box in TX mode changes to multi-select box in RX mode. By selecting partially or all boxes, The RX audio part can automatically identify the received signal type.



IF Received Signal Strength Indicator

IF Signal to Noise Ratio Indicator

Audio Signal Strength Indicator

User Interface in RX mode

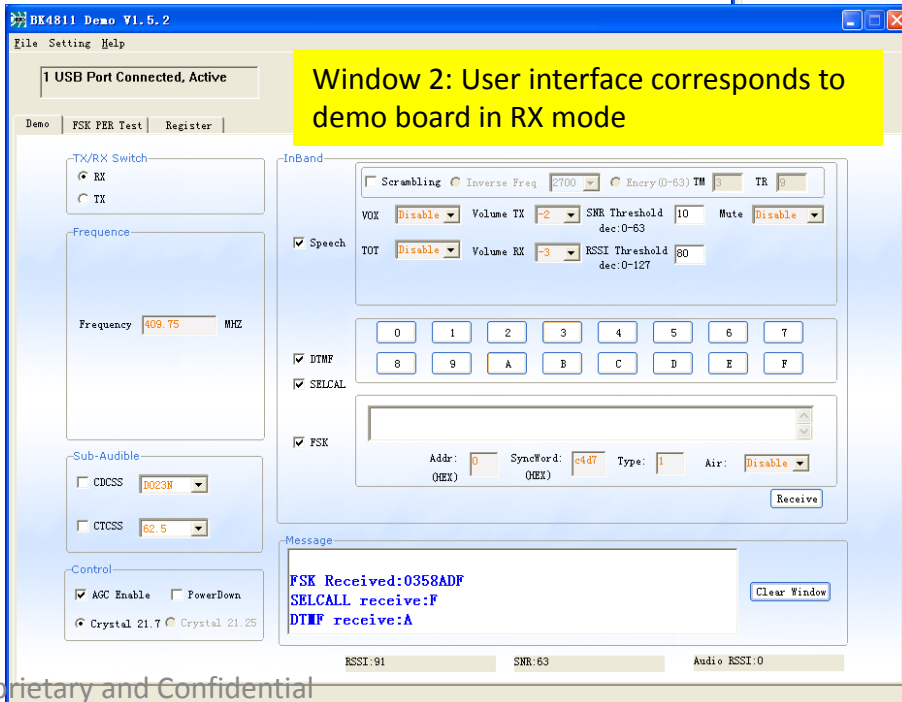
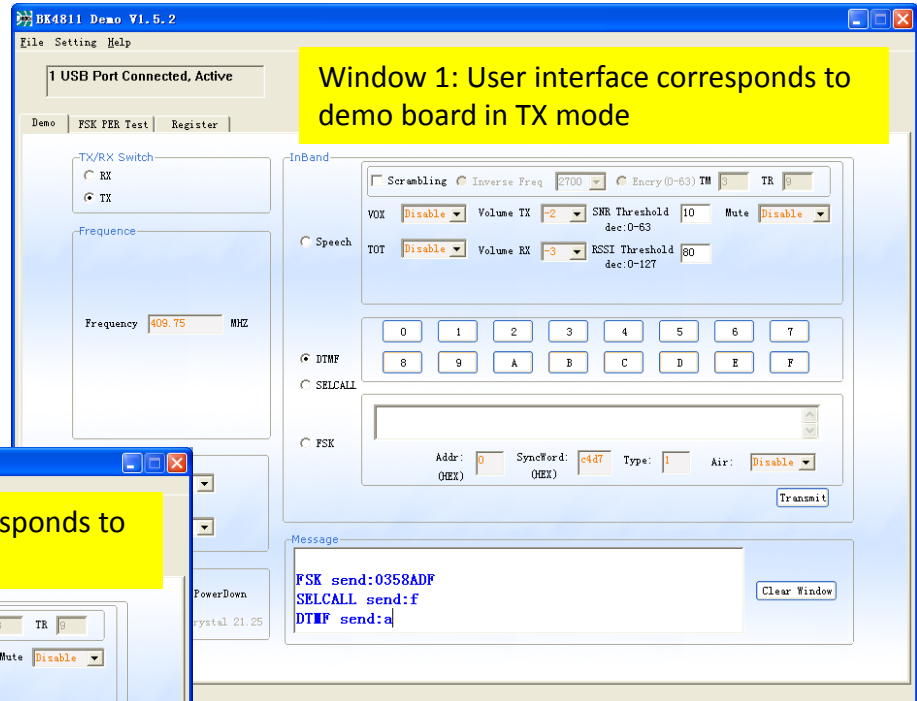
Software Description

Link Test

Transmit audio, DTMF, SELCALL and FSK signal using the setup method 2 described in page 6.

Test Procedure:

1. Choose RX mode in window 2.
2. The default frequency is 409.75MHz. You can set to other frequency, then click "Enter" on key board.
3. Select "Speech", "DTMF", "SELCALL" and "FSK".
4. Turn to window 1. Choose TX mode.



5. Set the frequency equals to that in RX mode, then click "Enter" on key board.
6. Select "FSK". Input a string in blank area, such as "0358ADF", then click "Transmit" button. You can find that the same string is displayed in the message area of window 2.
7. Select "SELCALL" in window 1. Click a symbol button, such as "F". Then you can find symbol "F" displayed in the message area of window 2.
8. Select "DTMF" in window 1. Click a symbol button, such as "A". Then you can find symbol "A" displayed in the message area of window 2.

Software Description

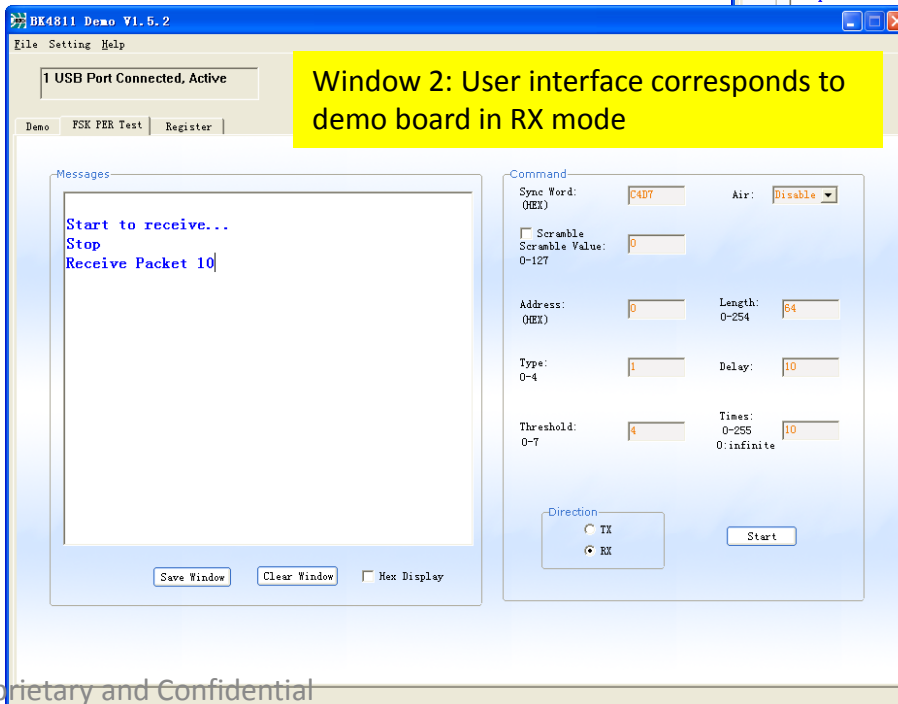
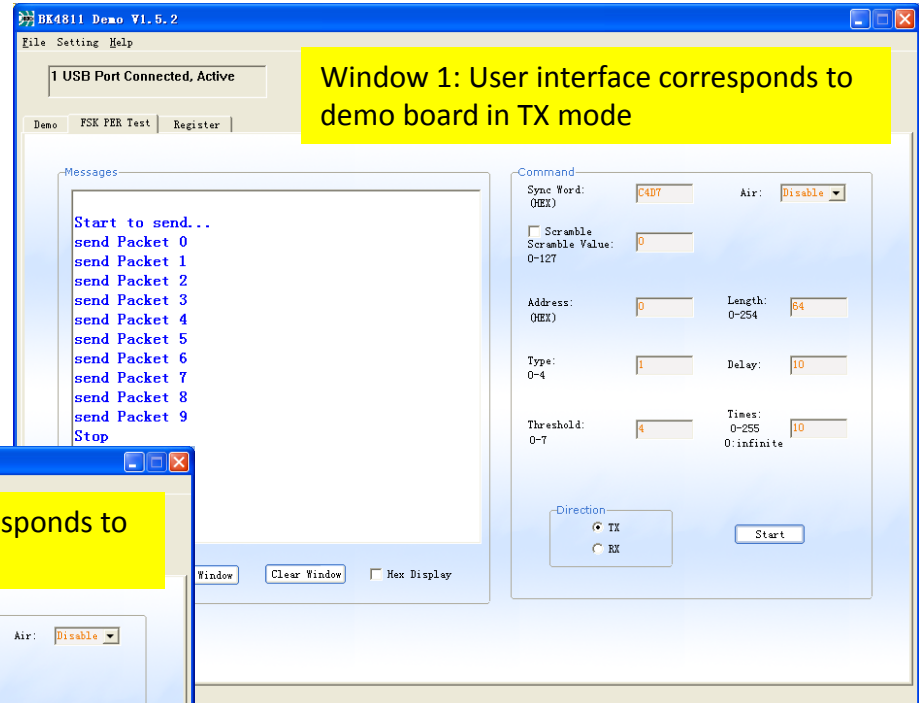
FSK PER Test

PER: Package Error Rate

Using the setup method 2 described in Page 6.

Operating Instructions

1. Definitions of Sync Word, Scramble, Address and Length can be found in the datasheet of BK4811B (Page 12).
2. Air Enable: FSK packet transmit directly through FM modulation
3. Air Disable: FSK packet transmit through MSK modulated subcarrier
4. TX/RX: Demo board operating mode selection.



Test Procedure:

1. Choose RX mode in window 2. Then click "Start". The demo board in RX mode is ready to receive packets.
2. Turn to window 1. Choose TX mode. Then click "Start". The demo board in TX mode will send 10 packets.
3. Click "Stop" in window 1.
4. Turn to window 2. Click "Stop". Then the number of packets received will be shown in message area.

